

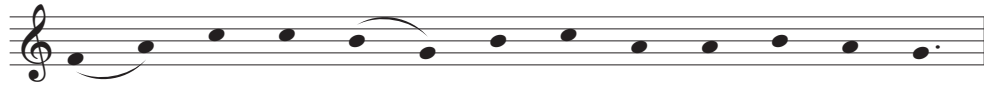
# Lumen ad revelationem

Antifona | Apresentação do Senhor

C. Gregoriano



Lu - men ad re - ve - la - ti - o - nem gen - ti - um:



et glo - ri - am ple - bis tu - æ Is - ra - el.



*Cant.* Nunc di - mit - tis ser - vum tu - um, Do - mi - ne,



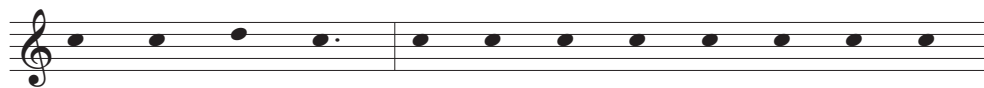
se - cun - dum ver - bum tu - um in pa - ce. Lu - men...



Qui - a vi - de - runt o - cu - li me - i



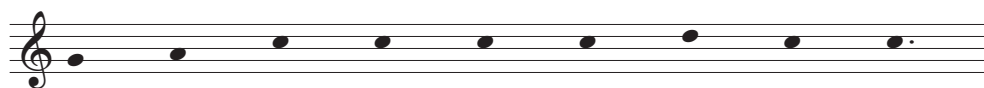
sa - lu - ta - re tu - um. Lumen...



Quod pa - ras - ti an - te fa - ci - em om - ni - um



po - pu - lo - rum. Lumen...



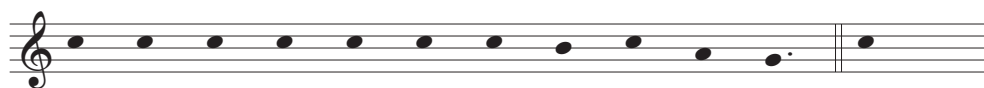
Glo - ri - a Pa - tri, et Fi - li - o,



et Spi - ri - tu - i San - cto. Lumen...



Si - cut e - rat in prin - ci - pi - o, et nunc, et sem - per,



et in sæ - cu - la sæ - cu - lo - rum. A - men. Lumen...